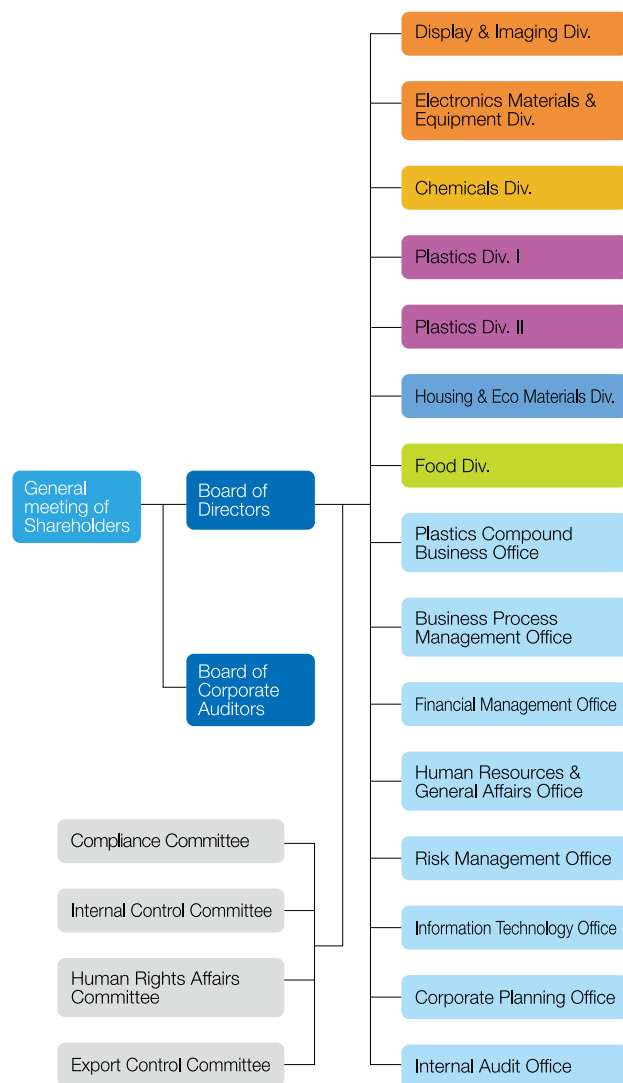


Organization

(As of July 1, 2011)



Corporate data

(As of March 31, 2011)

Founded	: October 1, 1890
Incorporated	: June 10, 1918
Paid-in Capital	: ¥9,364 million
Osaka Head Office	: 1-15-14, Minamisemba, Chuo-ku, Osaka 542-8558, Japan Tel: +81-6-6267-6051
Tokyo Head Office	: 2-8-2, Nihonbashihoncho, Chuo-ku, Tokyo 103-8448, Japan Tel:+81-3-3639-6415
Nagoya Office	: 3-22-8, Meieki, Nakamura-ku, Nagoya 450-8521, Japan Tel:+81-52-562-2901
Domestic Offices	: Matsumoto, Mie, Kyushu (Kagoshima Pref.)
Number of Employees	: 550 (3,828 on consolidated basis)
Number of Shareholders	: 6,029
Number of Shares Issued and Outstanding	: 65,159,227
Independent Auditors	: KPMG AZSA LLC
Stock Listing	: Inabata & Co.,Ltd.'s stock is listed on the Tokyo Stock Exchange and the Osaka Securities Exchange
Website	: www.inabata.co.jp



This book is printed with vegetable-based inks