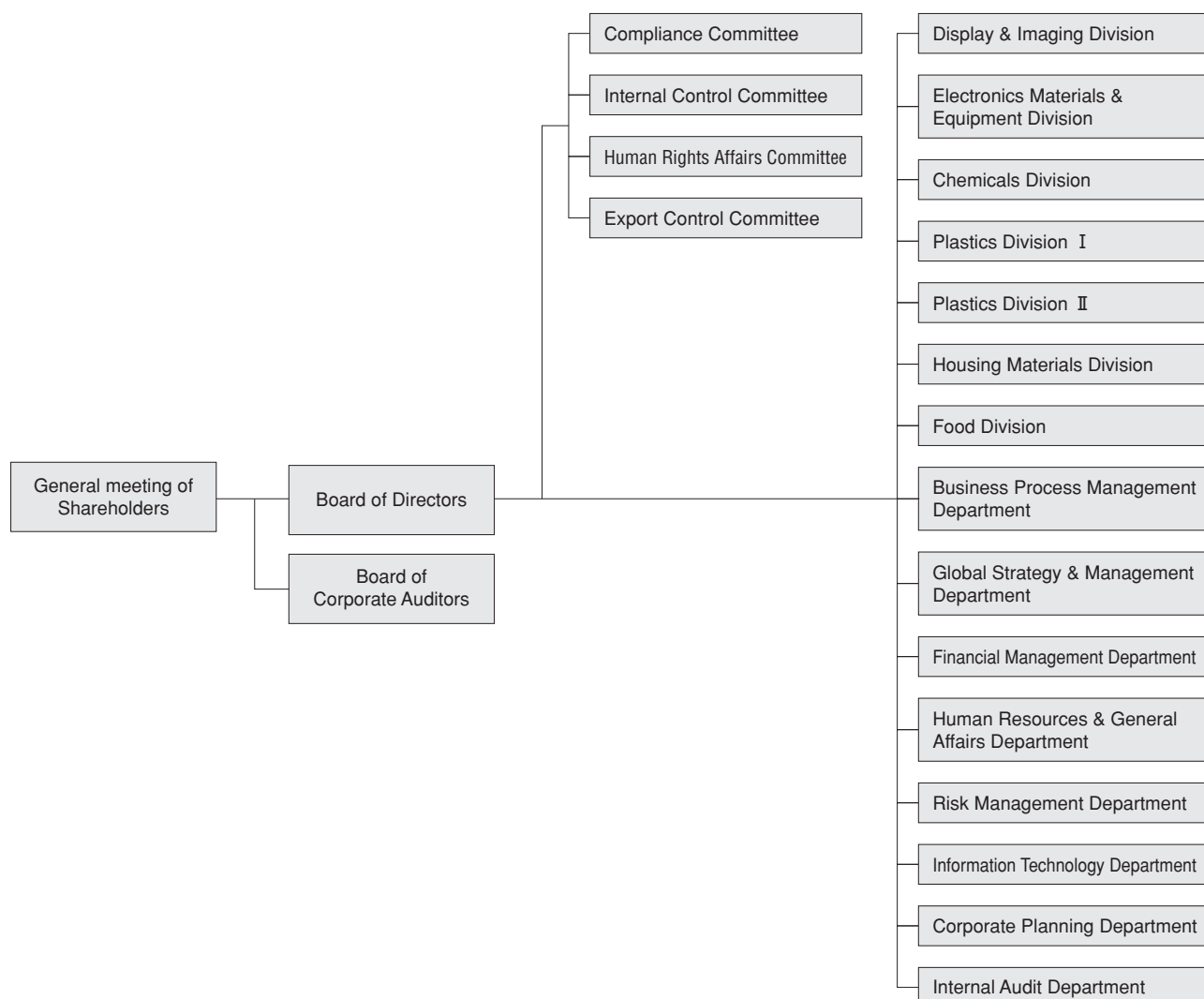


Organization

(As of July 1, 2009)



Corporate data

(As of March 31, 2009)

Founded	October 1, 1890
Incorporated	June 10, 1918
Paid-in Capital	¥9,364 million
Location	Osaka Head Office 1-15-14, Minamitemma, Chuo-ku, Osaka 542-8558, Japan Tokyo Head Office 2-8-2, Nihonbashihoncho, Chuo-ku, Tokyo 103-8448, Japan Nagoya Office 3-22-8, Meieki, Nakamura-ku, Nagoya 450-8521, Japan
Domestic Offices	Matsumoto, Mie, Kyushu
Number of Shareholders	5,108
Number of Shares Issued	65,159,227
Number of Employees	544 (4,282 on consolidated basis)
Independent Auditors	KPMG Azsa & Co.
Stock Listing	Inabata & Co., Ltd.'s stock is listed on the Tokyo Stock Exchange and the Osaka Securities Exchange
Website	www.inabata.co.jp